

Powells Creek Naturalisation



We are transforming sections of Powells Creek into a natural waterway by replacing the old concrete banks with sandstone and native plants

By transforming the banks of Powells Creek we will be creating a better environment for everyone to enjoy.

We'll remove the old concrete banks and replace them with more gently sloped banks with sandstone and native plants.

The naturalised banks will provide habitat for birds and other native wildlife. We will also build seats, a boardwalk and shared paths for the community to enjoy.



An example of naturalised banks recently built by Sydney Water (Cooks River)

When will it start

Work is due to start in May 2017 and finish by late 2018. We'll contact you before work starts and provide regular updates during the project.

Community information day

Join us for a free sausage sizzle and learn more about our work at Powells Creek.

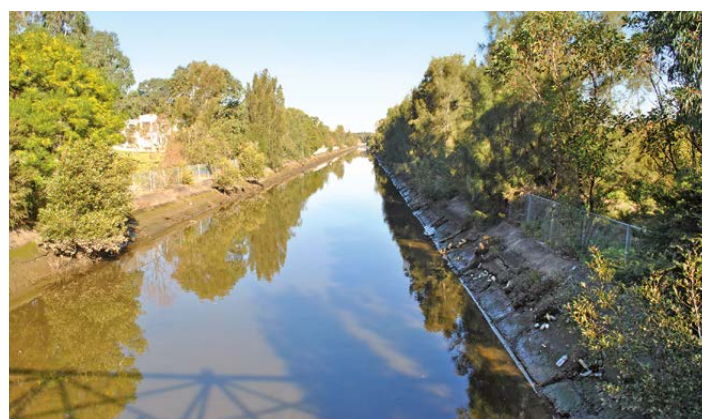
The project team from Sydney Water will be on hand to discuss this project and answer your questions.

Representatives from the local councils will also be joining us.

Date: **Saturday 8 April 2017**

Time: **11 am to 1 pm**

Where: **Powells Creek Reserve, end of Conway Avenue, North Strathfield**



Old concrete banks along Powells Creek will be replaced with sandstone and local native plants

Powells Creek Naturalisation



1 Sandstone blocks to replace concrete banks. The existing Casuarinas will be removed to allow us to do this.



2 Gently sloping banks made up of sandstone boulders and low growing native plants will replace the old concrete banks



3 Improved vistas with shared path and areas to sit and relax



4 Concrete banks to be renewed where space does not allow naturalisation



What we plan to do

- Set up temporary compound in Powells Creek Reserve
- Remove trees on the edge of the creek
- Remove old concrete, then dig out the banks
- Place sandstone
- Install plants
- Replace concrete banks in some places
- Install seats, boardwalks and shared paths
- Install community facilities

Impacts on the community

- Large trucks travelling through streets
- Limited access to Powells Creek Reserve
- Noise from construction equipment and jackhammering
- Temporary closures to walkways and cycle ways

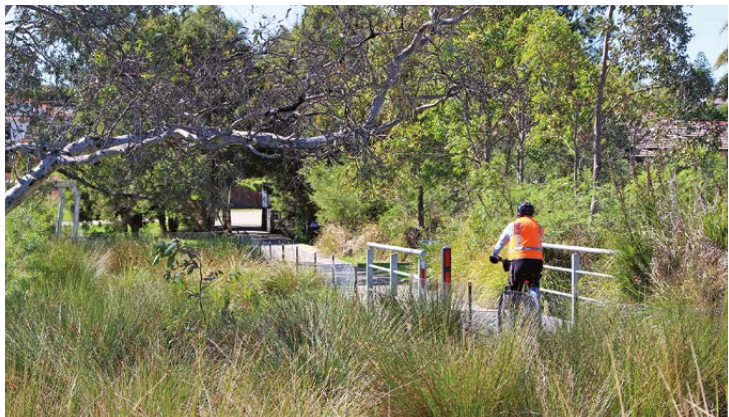
Every effort will be made to minimise the impact of our work on you.

To know more about our work please call **Sydney Water, Community Relations** on **1300 131 338**.

New shared path in Powells Creek Reserve

Canada Bay Council has asked us to build a three metre wide concrete shared path (for cyclists and pedestrians) through Powells Creek Reserve between the Conway Avenue pedestrian bridge and Warsaw Street.

Canada Bay Council will be talking to the community about the new shared path. To provide feedback regarding the path please contact **Canada Bay Council** on **9911 6555**.




5 New shared path, boardwalks and seating for the community to enjoy



6 Fauna passage between Powells Creek and Mason Park Wetland





 Powells Creek Naturalisation Project site

Will the naturalisation make the flooding worse?

No, the work will not make the flooding worse. During the design of the project, extensive flood modelling is used to identify any problems. We 'test' the design and how it would work through different levels of flooding. The results showed that our work would slightly improve the flood capacity of the creek.

Are the fences along the river going to be removed?

In some areas, where the banks are fully naturalised, we will remove the fence. The naturalised banks have a much gentler slope than the existing concrete bank. In areas where the slope is steep, fences will remain.

Won't the naturalised banks be destroyed by extreme weather or floods?

The naturalised banks are designed to withstand extreme weather conditions and floods. The rocks will be shaped and placed so they interlock and create strong barrier that holds together in extreme flood conditions. Plants with strong root systems will help anchor the banks, just as they do on natural creeks.

Will any trees be removed?

Yes as part of the work we will need to remove a number of trees located along the edge of both sides of the bank. The naturalisation work will include the planting of tens of thousands of local native plants, which will significantly improve the local environment.

When was the community consulted on this project?

We first contacted residents living in the area back in 2008 to gauge their interest in naturalising their local creek through a survey and an open day. Based on the feedback we received, Sydney Water developed the idea and presented concept designs to the community in 2013. Funding for this project has now been approved and we are looking forward to working with you as we transform Powells Creek.

Why can't we naturalise the entire length of Powells Creek?

We are naturalising as much of the creek as we can. We only naturalise banks in need of repair, where we have enough space, and a suitable budget to do the work. There are other restrictions like land condition and underground services. Where we can't naturalise, and the bank needs repair, we'll generally replace it with concrete.

Who is responsible for the maintenance of the naturalisation?

Ongoing maintenance will be done by Sydney Water up to the top of the banks, and the remainder will be maintained by the relevant Council.

To know more

To find out more about this project

Call **Sydney Water Community Relations on 1300 131 338**

Email waterways@sydneywater.com.au

Visit www.sydneywatertalk.com.au/powells